

GPA-0060

IP Paging Amp Adapter



SPON GPA-0060 IP paging adaptor is SIP enabled multifunctional IP audio device dedicated for industry users. It can convert voice streams from a SIP paging system or IP PBX system to analogue sounds for background music, public address, etc. With the compact hardware design, open standard SIP protocol support, rich functionality and high performance.

SIP

MAIN FEATURES

User-Friendly Configuration & Compatibility

- Easy setup via web interface or DevConfig Tool.
- Compatible with most analog amplifiers and standard SIP protocol for VoIP integration (Yeastar, Asterisk, Cisco, etc.).

Amplification & Audio Management:

- Built-in 60W or 120W Class-D digital amplifier module for 4Ω/8Ω passive speakers, suitable for series or parallel connection.
- External audio source support and dynamic volume control for clear voice output.

Connectivity & Broadcasting:

- Ability to receive live voice announcements from third-party VoIP systems or SPON software.
- Offline timed broadcasting independent of a server.
- Relay I/O port for connection to third-party fire alarm systems.

SPECIFICATION

POWER PARAMETERS

Power Supply: DC 24V/2.7A

Power Consumption: ≤3W

AUDIO PARAMETERS

Audio Codec: G.711 A-Law, G.711 M-Law,
G.729, PCM/L16

S/N (Signal-To-Noise)
Ratio: ≥86dB

Audio Sampling & Bit
Rate: 8kHz~44.1kHz, 16bit,
8kbps~320kbps

THD (Total Harmonic
Distortion): ≤0.3% @ 1kHz

Frequency Response: 50Hz~20kHz

NETWORK PARAMETERS

Network I/F: 10BASE-T/100BASE-TX RJ45

Network Protocol: SIP (RFC3261), HTTP, TCP/IP,
UDP, ARP, ICMP, IGMP

Configuration Method: Web Interface Or DevConfig
Tool.

MECHANICAL & ENVIRONMENT PROPERTIES

Mounting Method: Wall-Mounted Or Desktop

Installation Environment: Dry Indoor Locations Only

Operating Temperature: -20°C~55°C (-4°F~131°F)

Storage Temperature: -40°C~65°C (-40°F~149°F)

Operating Humidity: 10%~90% RH Non-
Condensing

Casing Material: Iron

Color: Black

Dimensions: 140×71×43mm

Weight: 0.4kg

ACCESSORIES

Standard Accessories

- Pluggable Terminal Block Connector (2-Pin)
- Pluggable Terminal Block Connector (4-Pin)

Optional Accessories

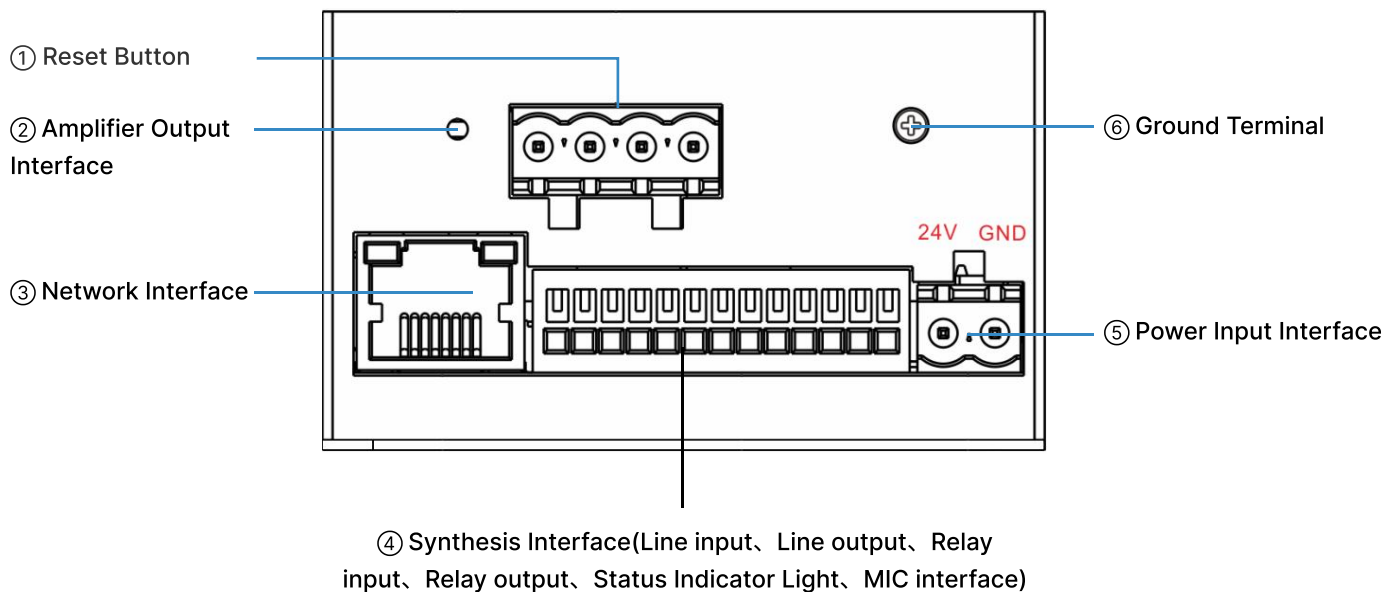
- DC 24V/2.7A Power Adapter (Full English Marking)
- Power Cord (IEC C13 Female - Type A/C/G Power Plug)

COMPLIANCE

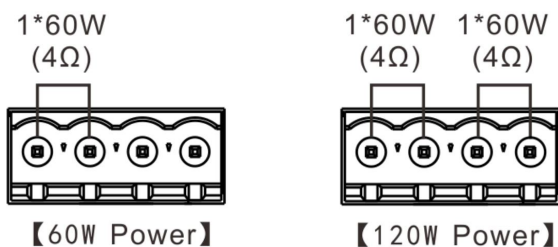
Approved Standards

- EN 55032:2015、EN 55035:2017

PORTS DESCRIPTION

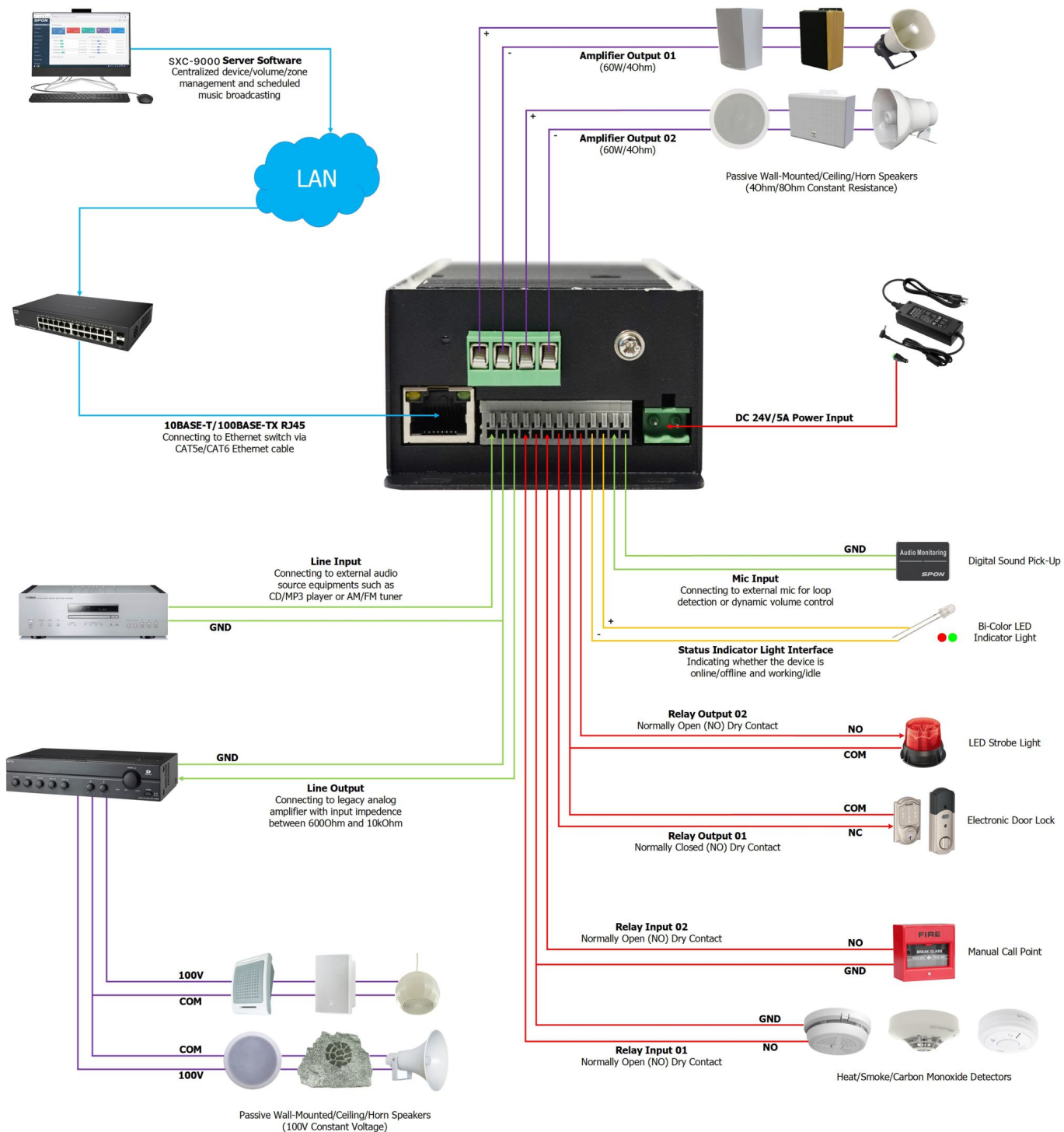


The built-in 1×60 or 2×60-watt class-D digital amplifier module of the IP paging adapter enables the device to drive multiple connection mode of passive loudspeaker. For detail, please take the table for reference:



Power Output	Loudspeaker	Connection Mode	Recommend Passive Speaker
60W	1×60W/4Ω	Direct	-
	2×30W/8Ω	Parallel	SPON™ NAC-2503 30 Watt 8 Ohm Horn Speaker SPON™ NAC-301X 30 Watt 8 Ohm Cabinet Speaker SPON™ NAC-301H 30 Watt 8 Ohm Cabinet Speaker
	4×15W/4Ω	Series-parallel	-
120W	2×60W/4Ω	Direct	-
	4×30W/8Ω	Parallel	SPON™ NAC-2503 30 Watt 8 Ohm Horn Speaker SPON™ NAC-301X 30 Watt 8 Ohm Cabinet Speaker SPON™ NAC-301H 30 Watt 8 Ohm Cabinet Speaker
	4×15W/8Ω	Parallel	SPON™ NAC-2509 15 Watt 8 Ohm Horn Speaker
	4×10W/8Ω	Parallel	SPON™ NAC-301C 10 Watt 8 Ohm Wall Mount Speaker SPON™ NAC-301F 10 Watt 8 Ohm Wall Mount Speaker SPON™ NAC-2507 10 Watt 8 Ohm Horn Speaker
	8×15W/4Ω	Series-parallel	-

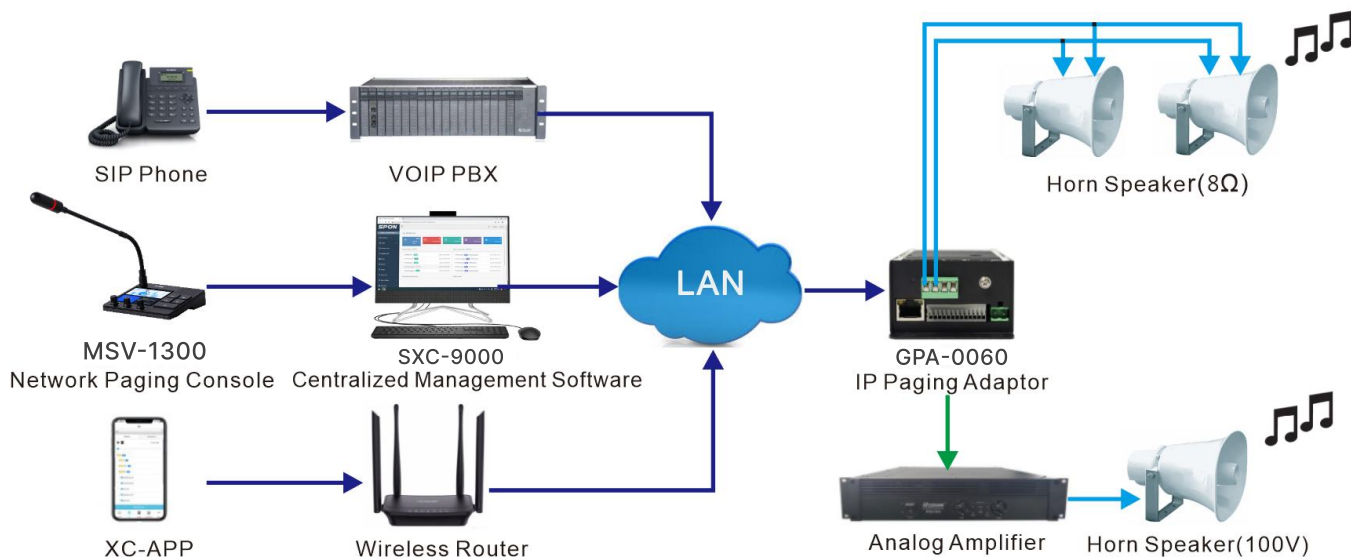
CONNECTION DIAGRAM



APPLICATION

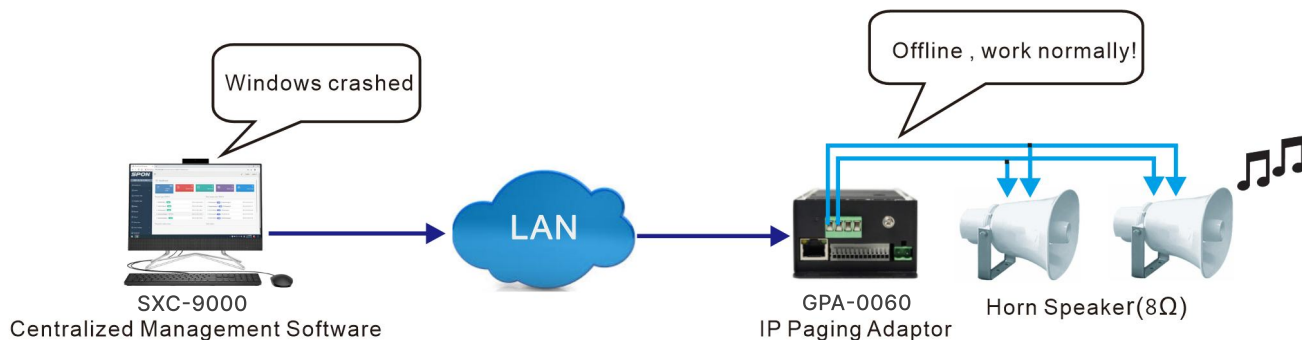
Application 1

The IP paging adaptor GPA-0060 can receive real-time voice announcement initiated by the 3-rd party VOIP telephone、SPON IP paging microhone/APP(Windows、Android/IOS),etc. With built-in amplifier and line output interface, the voice can be transmitted to external passive speaker for amlification.



Application 2

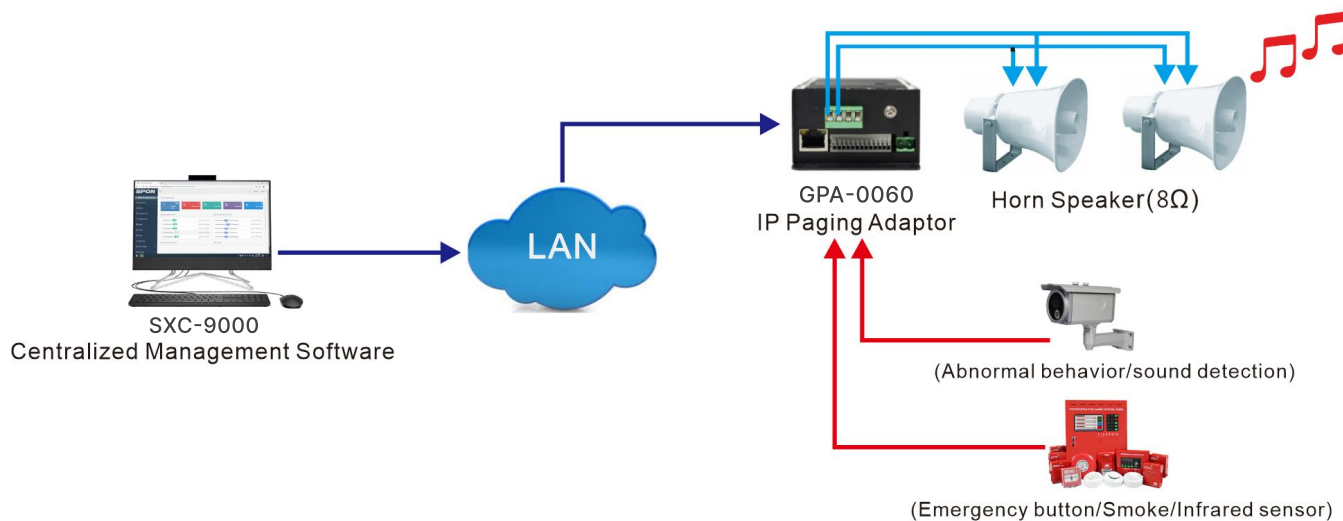
The IP paging adaptor GPA-0060 support to receive offline timed broadcasting , the offline timed tasks need to be pushed to the FTP of GPA-0060, when the windwos crashed , the system can normally work .



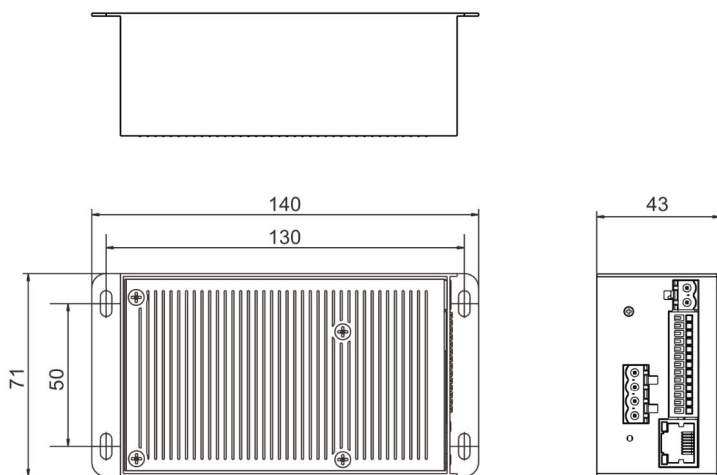
APPLICATION

Application 3

The IP paging adaptor GPA-0060 support to automatic broadcast the alarm tone when receiving relay input signal from the 3-rd party system (For example ,IP camera of surveillance system 、 Emergence button of Fire alarm system) , the alarm tone needs to be pre-uploaded to the FTP of GPA-0060 .



DIMENSION DRAWING



The IP paging adaptor GPA-0060 is suitable for wall mounting. Four plastic expansion sleeves and four m3 * 4 half round head tapping screws are used to fix the equipment at the required position on the wall according to the following appearance installation dimension drawing.

